



300L SERIES

KEY BENEFITS

- All-stainless wetted connection for corrosive or demanding service.
- Liquid-filled design improves readability under vibration and pulsation.
- Field-ready construction for reliable industrial pressure monitoring.



STAINLESS X STAINLESS LIQUID FILLED PRESSURE GAUGE

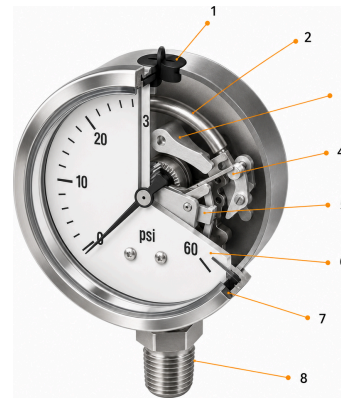
OVERVIEW

The Apache 300L Series is a stainless x stainless liquid-filled pressure gauge designed for reliable, readable performance in demanding industrial pressure applications where corrosion resistance, vibration, and durability matter.

- ✓ **HOUSING** Stainless steel
- ✓ **CONNECTOR** Stainless steel
- ✓ **FACE SIZES** 2.5" / 4"
- ✓ **CONNECTION** 1/4" & 1/2" NPT

MATERIAL / COMPONENT TABLE

No	Part	Material
1	Housing	Stainless Steel
2	Bourdon Tube	Stainless Steel
3	Pointer	Black Finished Aluminum
4	Movement	SS304
5	Dial Face	Aluminum
6	Lens	Glass
7	Ring	Stainless Steel
8	Connector	Stainless Steel



SPECIFICATIONS

Series 300L
 Type Liquid Filled Gauge
 Housing Stainless Steel
 Connector Stainless Steel
 Connection 1/4" & 1/2" NPT

OPTIONS

- 2.5" face configuration
- 4" face configuration
- Bottom mount NPT connection

NOTES

Design and material specifications may change without prior notice. Consult your Apache sales representative for current application, range, and availability information.

QUALITY. INTEGRITY. RELIABILITY.

Engineered solutions for demanding environments.

www.apachemfg.com

GREATER HOUSTON

8809 Bailey Rd
 Manvel, TX 77578
 (713) 941-1669

ODESSA

2650 West Remington Rd
 Odessa, TX 79763
 (432) 385-7470