

### KEY BENEFITS

- 200 PSI ductile iron body
- 10-position locking handle
- ANSI 150 flange - ISO 5211 mounting pad

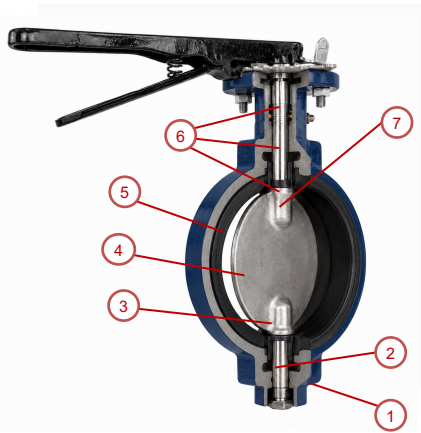


## 200 PSI WAFER BUTTERFLY VALVE

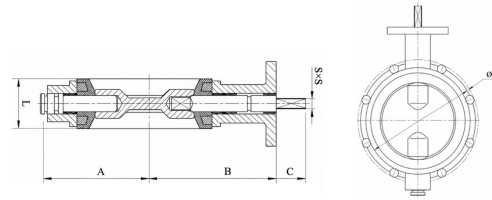
### OVERVIEW

The Apache DWB200 Series is a 200 PSI wafer-style butterfly valve with a ductile iron body, square stem, and 10-position locking handle. Built to ISO 5752 face-to-face with an ISO 5211 mounting pad and ANSI 150 flange fit, the series offers multiple seat and disc selections for broad media compatibility in HVAC, water, and general industrial service.

### DIMENSIONAL DATA



Size	A	B	C	ØD	L	S	Torque (ft-lb)
2"	2.99	3.94	1.10	4.75	1.65	0.625	14
3"	3.66	4.92	1.10	6.00	1.77	0.625	29
4"	4.29	6.02	1.10	7.50	2.05	0.625	48
5"	4.84	6.14	1.10	8.50	2.13	0.625	75
6"	5.35	6.69	1.10	9.50	2.20	0.625	109
8"	6.54	9.45	1.50	11.75	2.36	0.875	177
10"	7.83	11.22	1.50	14.25	2.60	0.875	280
12"	9.37	11.81	1.50	17.00	3.03	1.125	397



### MATERIALS / CONSTRUCTION

#	COMPONENT	MATERIAL
1	Body	Ductile Iron
2	O-Ring	Buna-N / EPDM / FKM
3	Lower Stem	SS410
4	Disc	DI / CF8M / Al Bronze
5	Seat	EPDM / Buna-N / PTFE / FKM
6	Bushing	PTFE
7	Top Stem	SS410

### STANDARDS & OPTIONS

<b>Pressure Rating</b>	200 PSI
<b>Body</b>	Ductile iron, wafer style
<b>Stem</b>	Square stem, 10-position handle
<b>Seats</b>	Buna, EPDM, Teflon, FKM
<b>Disc Options</b>	Nickel-plated DI, aluminum bronze, SS316
<b>Face-to-Face</b>	ISO 5752
<b>Mounting</b>	ISO 5211 pad
<b>Flange</b>	ANSI 150

**QUALITY. INTEGRITY. RELIABILITY.**

Engineered solutions for demanding environments.

 [www.apachemfg.com](http://www.apachemfg.com)

#### GREATER HOUSTON

8809 Bailey Rd  
Manvel, TX 77578  
(713) 941-1669

#### ODESSA

2650 West Remington Rd  
Odessa, TX 79763  
(432) 385-7470