

KEY BENEFITS

- ANSI Class 300 · API 6D tested
- Floating ball · ISO 17292 design
- Lever (2"–4") or gear (6"–8") operated

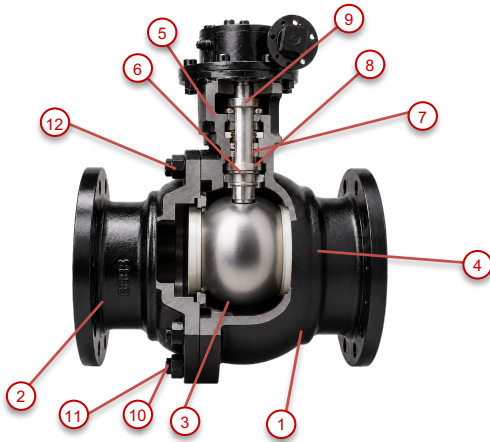


CLASS 300 FLANGED FLOATING BALL VALVE

OVERVIEW

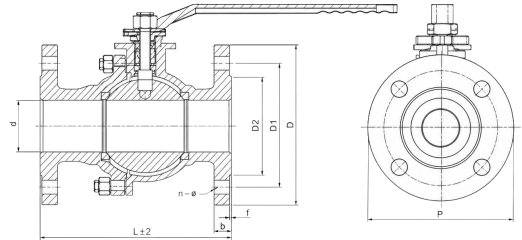
The Apache FL-300A Series is a Class 300 flanged floating ball valve in cast steel, designed in accordance with ISO 17292 and tested to API 6D. Offered lever-operated in 2"–4" and gear-operated in 6"–8", with stainless ball and stem and NACE MR-0175 compliance for severe oilfield service.

DIMENSIONAL DATA



NPS	d	G	C	D	t	n-Øh	L	H	W
2"	2.01	3.62	5.00	6.50	0.87	8–19.1	8.50	5.43	15.75
3"	2.99	5.00	6.62	8.25	1.12	8–22.2	11.14	6.89	17.72
4"	4.02	6.19	7.88	10.00	1.25	8–22.2	12.01	7.95	19.69
6"	5.98	8.50	10.62	12.50	1.44	12–22.2	15.87	9.45	15.75
8"	7.99	10.62	13.00	15.00	1.62	12–25.4	19.76	11.34	15.75

Dimensions in inches. d = bore · C/D = flange · n-Øh = bolt count-hole dia · L = face-to-face. 2"–4" lever operated; 6"–8" gear operated.



MATERIALS / CONSTRUCTION

#	COMPONENT	MATERIAL
1	Body	ASTM A216 WCB
2	Seat	RPTFE
3	Ball	ASTM A182 F316
4	Stem	ASTM A182 F51
5	Antistatic Spring	Inconel X-750
6	Thrust Washer	SS + Copper + RPTFE
7	O-Ring	Viton
8	Packing	Graphite
9	Gland	Stainless Steel
10	Body Stud	ASTM A193 B7M
11	Body Nut	ASTM A194 2HM
12	Adapter	ASTM A216 WCB

STANDARDS & OPTIONS

Pressure Rating	ANSI Class 300
Body	Cast steel
Ball	Floating ball
Design	ISO 17292
Testing	API 6D
Operator	Lever (2-4")/ gear (6-8")
Compliance	NACE MR-0175 compliant

QUALITY. INTEGRITY. RELIABILITY.

Engineered solutions for demanding environments.

 www.apachemfg.com

GREATER HOUSTON

8809 Bailey Rd
Manvel, TX 77578
(713) 941-1669

ODESSA

2650 West Remington Rd
Odessa, TX 79763
(432) 385-7470