

FSC SERIES

FORGED STEEL CLASS 800 SWING CHECK VALVE

KEY BENEFITS

- Class 800 forged steel body
- API 602 · fire-safe API 607
- CR13 stainless trim · NACE MR-0175

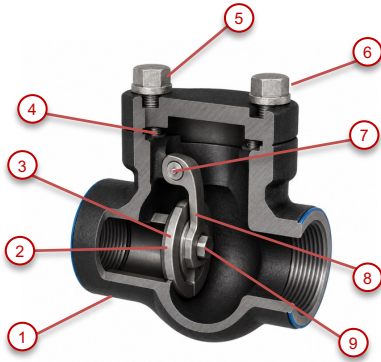


FORGED STEEL CLASS 800 SWING CHECK

OVERVIEW

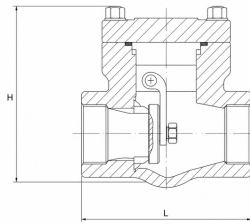
The Apache FSC Series is a Class 800 forged steel swing check valve for compact, high-integrity reverse-flow prevention. The A105 forged body with CR13 stainless trim is designed to API 602, fire-safe per API 607, and NACE MR-0175 compliant, with bolted-bonnet construction and threaded end connections.

DIMENSIONAL DATA

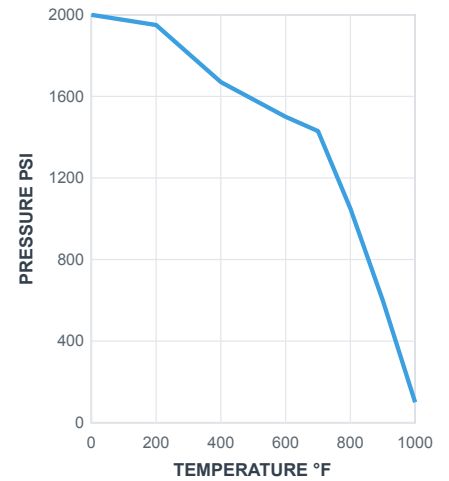


Part #	NPT	NPS	L
FSC2M0500	1/2"	1/2"	3.11
FSC2M0750	3/4"	3/4"	3.62
FSC2M1000	1"	1"	4.37
FSC2M2000	2"	2"	6.77

Dimensions in inches. L = end-to-end length.



PRESSURE / TEMPERATURE RATING



MATERIALS / CONSTRUCTION

#	COMPONENT	MATERIAL
1	Body	A105
2	Disc	A182 F6a
3	Seat	A182 F6a
4	Gasket	SS + Flexible Graphite
5	Bonnet	A105
6	Bolt	ASTM A193 B7M
7	Pin	PEEK
8	Hinge	Graphite
9	Nut	AISI 304

STANDARDS & OPTIONS

Pressure Rating	Class 800
Body	A105 forged steel, CR13 trim
Valve Style	Bolted-bonnet swing check
Design	API 602
Fire Safe	API 607
Threads	ANSI B1.20.1, BS21, DN 259/2999
Compliance	NACE MR-0175 compliant

QUALITY. INTEGRITY. RELIABILITY.

Engineered solutions for demanding environments.

 www.apachemfg.com

GREATER HOUSTON

8809 Bailey Rd
Manvel, TX 77578
(713) 941-1669

ODESSA

2650 West Remington Rd
Odessa, TX 79763
(432) 385-7470